

**h=40**

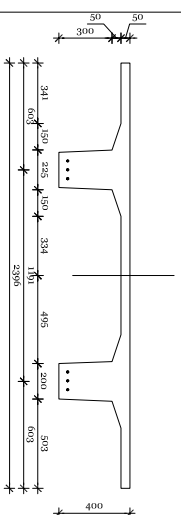
**h=50**

**h=60**

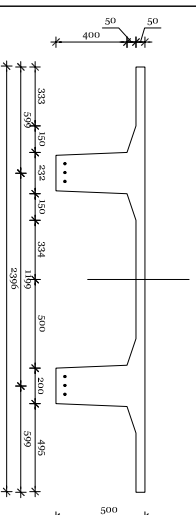
**h=70**

**h=80**

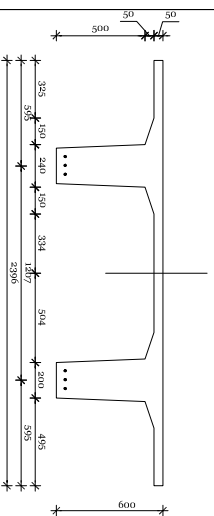
**6 strun**



V = 0,2846 m<sup>3</sup>/mb  
 Q = 7,12 kN/mb  
 ciegna: 6 x 15,2mm - 6,57kg/mb  
 PLYTA  
 TT240\_40.R60.6.20

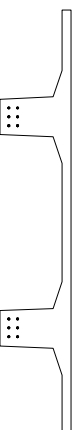


V = 0,3308 m<sup>3</sup>/mb  
 Q = 8,27 kN/mb  
 ciegna: 6 x 15,2mm - 6,57kg/mb  
 PLYTA  
 TT240\_50.R60.6.20

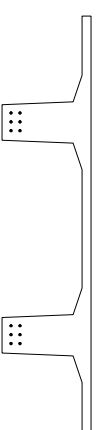


V = 0,3788 m<sup>3</sup>/mb  
 Q = 9,47 kN/mb  
 ciegna: 6 x 15,2mm - 6,57kg/mb  
 PLYTA  
 TT240\_60.R60.6.20

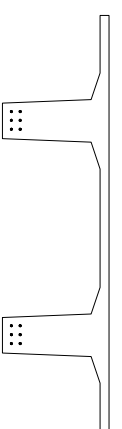
**12 strun**



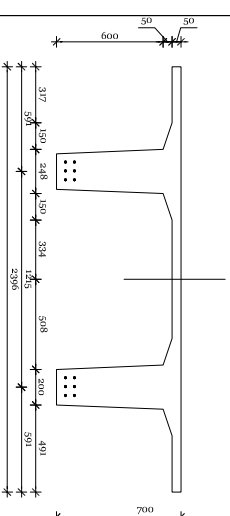
V = 0,2846 m<sup>3</sup>/mb  
 Q = 7,12 kN/mb  
 ciegna: 12 x 15,2mm - 13,14kg/mb  
 PLYTA  
 TT240\_40.R60.12.20



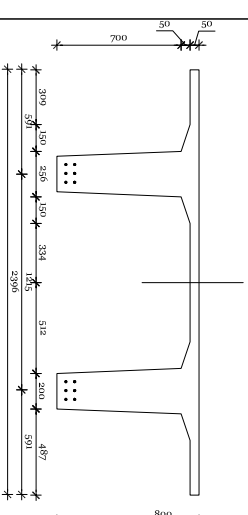
V = 0,3308 m<sup>3</sup>/mb  
 Q = 8,27 kN/mb  
 ciegna: 12 x 15,2mm - 13,14kg/mb  
 PLYTA  
 TT240\_50.R60.12.20



V = 0,3788 m<sup>3</sup>/mb  
 Q = 9,47 kN/mb  
 ciegna: 12 x 15,2mm - 13,14kg/mb  
 PLYTA  
 TT240\_60.R60.12.20

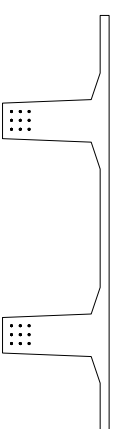


V = 0,4284 m<sup>3</sup>/mb  
 Q = 10,71 kN/mb  
 ciegna: 12 x 15,2mm - 13,14kg/mb  
 PLYTA  
 TT240\_70.R60.12.20

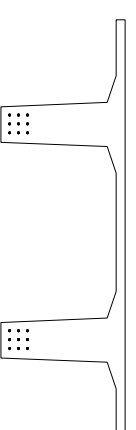


V = 0,4796 m<sup>3</sup>/mb  
 Q = 11,99 kN/mb  
 ciegna: 12 x 15,2mm - 13,14kg/mb  
 PLYTA  
 TT240\_80.R60.12.20

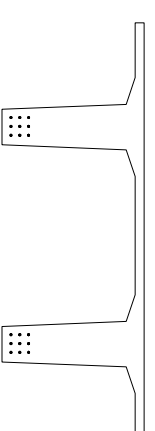
**18 strun**



V = 0,3788 m<sup>3</sup>/mb  
 Q = 9,47 kN/mb  
 ciegna: 18 x 15,2mm - 19,71kg/mb  
 PLYTA  
 TT240\_60.R60.18.20

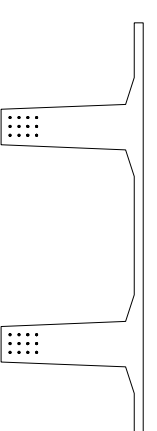


V = 0,4284 m<sup>3</sup>/mb  
 Q = 10,71 kN/mb  
 ciegna: 18 x 15,2mm - 19,71kg/mb  
 PLYTA  
 TT240\_70.R60.18.20



V = 0,4796 m<sup>3</sup>/mb  
 Q = 11,99 kN/mb  
 ciegna: 18 x 15,2mm - 19,71kg/mb  
 PLYTA  
 TT240\_80.R60.18.20

**24 struny**



V = 0,4796 m<sup>3</sup>/mb  
 Q = 11,99 kN/mb  
 ciegna: 24 x 15,2mm - 26,28kg/mb  
 PLYTA  
 TT240\_80.R60.24.20

**plyta TT**

szerokość płyty: 239,6cm

grubość półki: 5,0cm

szerokość żebra: 20,0cm

ognioodporność: R60